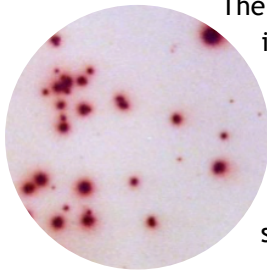


T cell and B cell ELISPOT assay

The ELISPOT assay is one of the most sensitive assays to monitor *ex vivo* cellular immune responses at the single cell level. The assay can accurately detect secreted cytokines, released by T cells in response to an antigen. The cell suspensions used in the test can be from PBMC, lymphoid or spleen cells.

U-CyTech offers a wide range of **T cell ELISPOT** kits or antibody pairs.

The kits contain coating antibodies, biotinylated detection antibodies, streptavidin-horseradish peroxidase, AEC coloring system, Tween-20, blocking and dilution buffer.



The traditional method to monitor a humoral response after immunization or infection is to quantify specific antibody levels in serum by ELISA. However, the actual correlate of protection is mediated by circulating antibodies in combination with antibody producing memory B cells.

The **B cell ELISPOT** assay has proven particularly useful to determine the number of individual antibody-producing memory B cells in single cell suspension in PBMC or spleen cells.