

4th Edition

ELISA Kits

Focusing on Emerging Research Fields:

Metabolic Syndrome Biomarkers

Obesity/Type 2 Diabetes Markers
Insulin Resistance Markers
Cardiovascular Markers

Inflammatory Diseases Biomarkers

Rheumatoid Arthritis
Neuroinflammation Markers

Cancer & Autoimmune Diseases Biomarkers

SARS-CoV-2/COVID-19 Research Assays



Biomarkers

ACE2	2
ACBP	2
Adiponectin	2
ANGPTL3 / ANGPTL6	2
APRIL / BAFF	3
Asprosin	4
B7-H3 [CD276]	4
Caspase-1	4
CD40L	4
DLK1	4
Erythroferrone [ERFE]	5
FGL1	5
FNDC4 NEW	5
Gasdermin D	5
Gasdermin E	5
GPX1 / GPX3	6
ICOSL	6
IL-1 α / IL-1 β	6
IL-36 α / IL-36 β / IL-36 γ	6/7
IL-36Ra	7
IL-37	7
IL-38	7
Irisin	7
Nampt/Visfatin	8
PD-1 / PD-L1	8
Periostin	8
Progranulin NEW mAb/mAb	9
RBP4	9
RELM- β	11
Resistin	11
SARS-CoV-2/COVID-19	10
Sirtuin 1	11
Vaspin	11
Zinc- α -2-glycoprotein	11
Oxidative Stress Marker Assays	12
Trace Element Assays	12
Latest Additions	12

ACE2 *see also on Page 10*

Hypertension, CVD, CKD, Atherosclerosis, COVID-19, Airway Inflammation

NEW ACE2 (human) ELISA Kit

AG-45B-0023

Available Size: 96 wells

Species reactivity: Human
Sensitivity: 40 pg/ml

Range: 0.0625 to 4 ng/ml
Sample type: Serum, Plasma, Urine, Cell Culture Supernatant

Acyl-CoA-binding Protein [ACBP]

Metabolic Syndrome, Obesity, CVD, Myocardial Infarction/Ischemia, Cancer (NSCLC)

NEW Acyl-CoA-binding Protein (human) ELISA Kit

AG-45B-0019

Available Size: 96 wells

Species reactivity: Human
Sensitivity: 30 pg/ml

Range: 0.03125 to 2 ng/ml
Sample type: Serum, Plasma, Cell Culture Supernatant

LIT: Acyl-CoA-binding protein (ACBP): the elusive 'hunger factor' linking autophagy to food intake: J.M. Bravo-San Pedro, et al.; Cell Stress 3, 312 (2019)

Adiponectin

Metabolic Syndrome, Obesity, Insulin Resistance, Type 2 Diabetes (T2D), CVD, NAFLD, Obesity-related Inflammation, Various Cancers

Adiponectin (human) ELISA Kit **THE STANDARD**

AG-45A-0001Y

Available Sizes: 96 wells / Twin Plex

Species reactivity: Human
Sensitivity: 100 pg/ml

Range: 0.5 to 32 ng/ml
Sample type: Serum, Plasma, Urine, Cell Culture Supernatant

Adiponectin (mouse) ELISA Kit

AG-45A-0004Y

Available Sizes: 96 wells / Twin Plex

Species reactivity: Mouse
Sensitivity: 50 pg/ml

Range: 0.125 to 8 ng/ml
Sample type: Serum, Plasma, Cell Culture Supernatant

NEW Adiponectin (rat) ELISA Kit

AG-45B-0026

Available Size: 96 wells

Species reactivity: Rat, Mouse, Human
Sensitivity: 50 pg/ml

Range: 0.0625 to 4ng/ml
Sample type: Serum, Plasma, Cell Culture Supernatant

ANGPTL3

Metabolic Syndrome, CVD, NAFLD, Insulin Resistance, Rheumatoid Arthritis, Atherosclerosis

ANGPTL3 (human) ELISA Kit

AG-45A-0014Y

Available Size: 96 wells

Species reactivity: Human
Sensitivity: 75 pg/ml

Range: 0.156 to 10 ng/ml
Sample type: Serum, Plasma, Cell Culture Supernatant

ANGPTL3 (mouse/rat) Dual ELISA Kit

AG-45A-0015Y

Available Size: 96 wells

Species reactivity: Mouse / Rat
Sensitivity: 15 pg/ml

Range: 0.016 to 1 ng/ml
Sample type: Serum, Plasma, Cell Culture Supernatant

ANGPTL6

Metabolic Syndrome, Type 2 Diabetes (T2D), Obesity, Insulin Resistance, Preeclampsia

ANGPTL6 (human) ELISA Kit

AG-45A-0016Y

Available Size: 96 wells

Species reactivity: Human
Sensitivity: 1.2 ng/ml

Range: 1.56 to 100 ng/ml
Sample type: Serum, Plasma, Cell Culture Supernatant

GLOSSARY: CVD: Cardiovascular Disease; NAFLD: Non-Alcoholic Fatty Liver Disease; SLE: Systemic Lupus Erythematosus; RA: Rheumatoid Arthritis

APRIL

Autoimmune Diseases (Sjögren's Syndrome, SLE, IgA Nephropathy (IgAN), Rheumatoid Arthritis, Lymphoma (CNSL), Atherosclerosis

NEW APRIL (human) ELISA Kit

AG-45B-0012

Available Size: 96 wells

Species reactivity: Human
Sensitivity: 7 pg/ml

Range: 7.8 to 500 pg/ml
Sample type: Serum, Plasma, Cell Culture Supernatant

BAFF

Autoimmune Diseases (Sjögren's Syndrome, SLE, Pancreatitis & Hepatitis), Lymphomas, Inflammatory Diseases (Polymyositis, RA, Sarcoidosis)

BAFF, Soluble (human) ELISA Kit (hypersensitive)

AG-45B-0001

Available Size: 96 wells

Species reactivity: Human
Sensitivity: 8 pg/ml

Range: 15.6 to 500 pg/ml
Sample type: Serum, Plasma, Cell Culture Supernatant

BAFF, Soluble (human) *Matched Pair Detection Set*

AG-46B-0001

Reagents to perform 5 x 96 wells

Species reactivity: Human
Sensitivity: 16 pg/ml

Range: 16 to 1000 pg/ml
Sample type: Serum, Plasma, Cell Culture Supernatant

Best-in-Class APRIL & BAFF ELISA Kits

AdipoGen[®]
LIFE SCIENCES

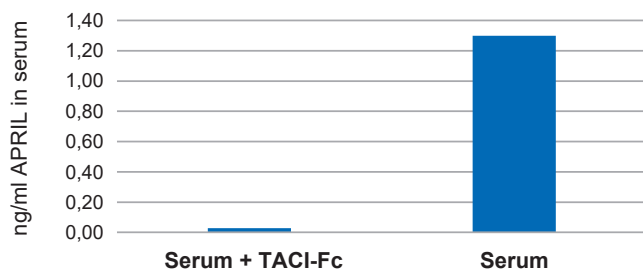
NEW APRIL (human) ELISA Kit

AG-45B-0012

96 wells

Sensitivity: 1 pg/ml
Range: 3.9 to 250 pg/ml
Sample: Cell Culture Supernatant, Plasma, Serum

Specificity: Serum from a healthy patient is treated with TACI (human):Fc (human) (Prod. No. AG-40B-0079) coupled to NHS-Sepharose (or EDAR-Fc beads as control). APRIL levels are measured using the APRIL (human) ELISA Kit (Prod. No. AG-45B-0012).



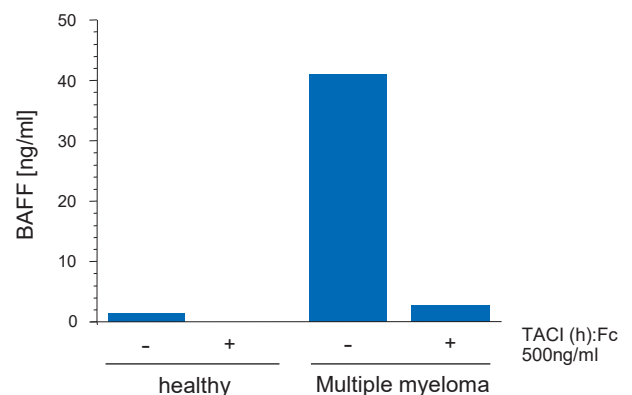
BAFF, Soluble (human) ELISA Kit (hypersensitive)

AG-45B-0001

96 wells

Sensitivity: 8 pg/ml
Range: 15.6 to 500 pg/ml
Sample: Cell Culture Supernatant, Plasma, Serum

Specificity: Serum from a healthy patient or patient with multiple sclerosis is left untreated or treated with 0.5 µg/ml of a BAFF receptor, TACI (human):Fc (human) (AG-40B-0079). BAFF levels are measured using the BAFF, Soluble (human) ELISA Kit (hypersensitive) (Prod. No. AG-45B-0001).



Asprosin

Metabolic Syndrome, Obesity, Type 2 Diabetes (T2D), CVD, PCOS

NEW Asprosin (human) ELISA Kit

AG-45B-0010

Available Size: 96 wells

Species reactivity: Human
Sensitivity: 230 pg/ml

Range: 0.3125 to 20 ng/ml
Sample type: Serum, Plasma, Cell Culture Supernatant

Asprosin (human) *Matched Pair Detection Set*

AG-46B-0011

Reagents to perform 5 x 96 wells

Species reactivity: Human
Sensitivity: 150 pg/ml

Range: 0.156 to 10 ng/ml
Sample type: Cell Culture Supernatant

B7-H3 [CD276]

Various Cancers (NSCLC, Prostate, Ovarian), Autoimmune Inflammatory Diseases (RA, Type 1 Diabetes, Asthma), CVD, Bacterial Infections (Meningitis, MPP)

NEW B7-H3 [CD276] (human) ELISA Kit

AG-45B-0025

Available Size: 96 wells

Species reactivity: Human
Sensitivity: 0.3 ng/ml

Range: 0.3125 to 20 ng/ml
Sample type: Serum, Plasma, Cell Culture Supernatant

Caspase-1

Assay for measuring Inflammasome Activation

Caspase-1 (mouse) ELISA Kit

AG-45B-0002

Available Size: 96 wells

Species reactivity: Mouse
Sensitivity: 33 pg/ml

Range: 0.15 to 10 ng/ml
Sample type: Serum, Plasma, Cell Culture Supernatant

Caspase-1 (mouse) *Matched Pair Detection Set*

AG-46B-0003

Reagents to perform 5 x 96 wells

Species reactivity: Mouse
Sensitivity: 50 pg/ml

Range: 0.15 to 10 ng/ml
Sample type: Cell Culture Supernatant

CD40L

Autoimmune Diseases (SLE), Chronic Lymphocytic Leukemia (CLL), Unstable Angina

NEW CD40L (human) ELISA Kit

AG-45B-0018

Available Size: 96 wells

Species reactivity: Human
Sensitivity: 20 pg/ml

Range: 0.03125 to 2 ng/ml
Sample type: Serum, Plasma, Cell Culture Supernatant

DLK1

Metabolic Syndrome, Various Cancers, Preeclampsia, Steatosis

DLK1, Soluble (human) ELISA Kit

AG-45A-0032Y

Available Size: 96 wells

Species reactivity: Human
Sensitivity: 336 pg/ml

Range: 0.47 to 30 ng/ml
Sample type: Serum, Cell Culture Supernatant

Erythroferrone [ERFE; Myonectin; CTRP15]

Anemia, Iron Metabolism, CVD, Metabolic Diseases, Doping Analysis

NEW Erythroferrone (human) ELISA Kit

AG-45B-0014

Available Size: 96 wells

Species reactivity: Human
Sensitivity: 270 pg/ml

Range: 0.3125 to 20 ng/ml
Sample type: Serum, Plasma, Cell Culture Supernatant

Erythroferrone (human) Matched Pair Detection Set

AG-46B-0012

Reagents to perform 5 x 96 wells

Species reactivity: Human
Sensitivity: 78 pg/ml

Range: 0.078 to 5 ng/ml
Sample type: Serum, Plasma, Cell Culture Supernatant

Fibrinogen-like Protein 1 [FGL1]

Various Cancers, Immunooncology, Rheumatoid Arthritis, Gestational Diabetes Mellitus (GDM)

NEW FGL1 (human) ELISA Kit

AG-45B-0022

Available Size: 96 wells

Species reactivity: Human
Sensitivity: 1.8 pg/ml

Range: 7.8 to 500 pg/ml
Sample type: Serum, Plasma, Cell Culture Supernatant

NEW FGL1 (human) Matched Pair Detection Set (mAb-based)

AG-46B-0014

Reagents to perform 5 x 96 wells

Species reactivity: Human
Sensitivity: <5 pg/ml

Range: 7.8 to 500 pg/ml
Sample type: Serum, Plasma, Cell Culture Supernatant

FNDC4

Inflammatory Bowel Diseases, Inflammatory Metabolic Diseases, Various Cancers (Glioblastoma)

NEW FNDC4 (human) ELISA Kit

AG-45B-0028

Available Size: 96 wells

Species reactivity: Human, Dog, Monkey, Mouse, Rat
Sensitivity: 40 pg/ml

Range: 0.078 to 5 ng/ml
Sample type: Serum, Plasma, Cell Culture Supernatant

Gasdermin D

Pyroptosis, Sepsis

NEW Gasdermin D (mouse) ELISA Kit

AG-45B-0011

Available Size: 96 wells

Species reactivity: Mouse
Sensitivity: 14 pg/ml

Range: 15.6 to 1000 pg/ml
Sample type: Cell Culture Supernatant, Cell Lysate

Gasdermin E

Pyroptosis, Sepsis

NEW Gasdermin E (human) ELISA Kit

AG-45B-0024

Available Size: 96 wells

Species reactivity: Human
Sensitivity: 50 pg/ml

Range: 0.0625 to 4ng/ml
Sample type: Serum, Plasma, Cell Culture Supernatant

GPX3 [Glutathione Peroxidase 3]

Hypertension, Type 2 Diabetes (T2D), CVD, Atherosclerosis, Amyotrophic Lateral Sclerosis (ALS)

GPX3 (human) ELISA Kit

AG-45A-0020Y

Available Sizes: 96 wells / Twin Plex

Species reactivity: Human
Sensitivity: 100 pg/ml

Range: 0.5 to 32 ng/ml
Sample type: Serum, Plasma, Cell Culture Supernatant

ICOSL [B7-H2; CD275]

Autoimmune Diseases (GVHD), Various Cancers, Asthma

NEW ICOSL (B7-H2/CD275) (human) ELISA Kit

AG-45B-0017

Available Size: 96 wells

Species reactivity: Human
Sensitivity: 55 pg/ml

Range: 0.0625 to 4 ng/ml
Sample type: Serum, Plasma, Cell Culture Supernatant

IL-1 α

Assay for measuring Inflammasome Activation and corresponding Inflammatory Diseases

IL-1 α (mouse) Matched Pair Detection Set

AG-46B-0004

Reagents to perform 5 x 96 wells

Species reactivity: Mouse
Sensitivity: 10 pg/ml

Range: 15.6 to 2000 pg/ml
Sample type: Cell Culture Supernatant

IL-1 β

Inflammasome-dependent Diseases, Familial Mediterranean Fever, Infections, Systemic Inflammatory Diseases, Selected Autoimmune Diseases, Various Cancers, Endometriosis, Allergic Rhinitis, Ventilator-associated Pneumonia, Neonatal Sepsis

NEW IL-1 β (human) ELISA Kit

AG-45B-0021

Available Size: 96 wells

Species reactivity: Human
Sensitivity: 1 pg/ml

Range: 1.5625 to 100 pg/ml
Sample type: Serum, Plasma, Cell Culture Supernatant

IL-36 α

Skin Inflammation, Psoriasis, IBD, Ulcerative Colitis, Crohn's Disease, Sjögren's Syndrome

NEW IL-36 α (human) ELISA Kit

AG-45B-0013

Available Size: 96 wells

Species reactivity: Human
Sensitivity: 4 pg/ml

Range: 7.8 to 500 pg/ml
Sample type: Cell Culture Supernatant, Cell Lysate

IL-36 β

Skin Inflammation, Psoriasis

IL-36 β (human) Matched Pair Detection Set

AG-46B-0009

Reagents to perform 5 x 96 wells

Species reactivity: Human
Sensitivity: 10 pg/ml

Range: 15.6 to 1000 pg/ml
Sample type: Cell Culture Supernatant

IL-36 γ

Skin Inflammation, Psoriasis, Lung & Bowel Inflammation

IL-36 γ (human) ELISA Kit

AG-45B-0008

Available Size: 96 wells

Species reactivity: Human
Sensitivity: 3 pg/ml

Range: 3.9 to 250 pg/ml
Sample type: Serum, Cell Culture Supernatant

IL-36 γ (human) Matched Pair Detection Set

AG-46B-0010

Reagents to perform 5 x 96 wells

Species reactivity: Human
Sensitivity: 1 pg/ml

Range: 3.9 to 250 pg/ml
Sample type: Cell Culture Supernatant

IL-36Ra

Skin Inflammation

IL-36Ra (human) Matched Pair Detection Set

AG-46B-0006

Reagents to perform 5 x 96 wells

Species reactivity: Human
Sensitivity: 0.5 ng/ml

Range: 0.78 to 50 ng/ml
Sample type: Cell Culture Supernatant

IL-37

Inflammatory Diseases, Autoimmune Diseases (SLE), Various Cancers, Asthma, Atherosclerosis

IL-37 (human) ELISA Kit

AG-45A-0041Y

Available Sizes: 96 wells / Twin Plex

Species reactivity: Human
Sensitivity: 10 pg/ml

Range: 0.016 to 1 ng/ml
Sample type: Serum, Plasma

IL-38

Allergic Inflammation, Asthma, Autoimmune Diseases (SLE)

IL-38 (human) Matched Pair Detection Set

AG-46B-0007

Reagents to perform 5 x 96 wells

Species reactivity: Human
Sensitivity: 20 pg/ml

Range: 0.031 to 2 ng/ml
Sample type: Serum, Cell Culture Supernatant

Irisin

Energy Metabolism, Obesity, Type 2 Diabetes (T2D), Insulin Resistance, COPD

Irisin Competitive ELISA Kit

AG-45A-0046Y

Available Sizes: 96 wells / Twin Plex

Species reactivity: Human / Monkey / Mouse / Rat
Sensitivity: 1 ng/ml

Range: 0.001 to 5 μ g/ml
Sample type: Serum, Plasma, Cell Culture Supernatant

LIT: High irisin levels are associated with better glycemic control and bone health in children with Type 1 diabetes: M.F. Faienza, et al.; *Diab. Res. Clin. Pract.* **141**, 10 (2018) • Grape pomace extract supplementation activates FNDC5/irisin in muscle and promotes white adipose browning in rats fed a high-fat diet: C. Rodriguez Lanzi, et al.; *Food Funct.* **11**, 1537 (2020)

Myonectin *see Erythroferrone on Page 5*

Nampt / Visfatin

Diabetes, Obesity, Sepsis, IBD, Crohn's Disease, Rheumatoid Arthritis, Preeclampsia, Various Cancers

Nampt [Visfatin/PBEF] (human) ELISA Kit THE STANDARD	AG-45A-0006Y	Available Sizes: 96 wells / Twin Plex
Species reactivity: Human	Range: 0.125 to 8 ng/ml	
Sensitivity: 30 pg/ml	Sample type: Serum	
Nampt [Visfatin/PBEF] (human) (IntraCellular) ELISA Kit	AG-45A-0008Y	Available Size: 96 wells
Species reactivity: Human	Range: 0.25 to 16 ng/ml	
Sensitivity: 30 pg/ml	Sample type: Cell Lysate	
Nampt [Visfatin/PBEF] (mouse/rat) Dual ELISA Kit	AG-45A-0007Y	Available Sizes: 96 wells / Twin Plex
Species reactivity: Mouse / Rat	Range: 0.5 to 32 ng/ml	
Sensitivity: 50 pg/ml	Sample type: Serum	

PD-1 [Programmed Cell Death Protein 1; CD279]

Various Cancers, PD-1/PD-L1 Immunotherapy

PD-1 (human) ELISA Kit	AG-45B-0015	Available Size: 96 wells
Species reactivity: Human	Range: 3.125 to 200 pg/ml	
Sensitivity: 1.6 pg/ml	Sample type: Serum, Plasma, Cell Culture Supernatant	

PD-L1 [Programmed Cell Death 1 Ligand Protein 1; CD274]

Various Cancers, PD-1/PD-L1 Immunotherapy

PD-L1 (human) ELISA Kit	AG-45B-0016	Available Size: 96 wells
Species reactivity: Human	Range: 2.34 to 150 pg/ml	
Sensitivity: 0.8 pg/ml	Sample type: Serum, Plasma, Cell Culture Supernatant	

Periostin

Asthma, Allergic Inflammation, Various Cancers, Metastasis in Epithelial Tumors, Renal Injury, Osteoarthritis

Periostin (human) ELISA Kit	AG-45B-0004	Available Size: 96 wells
Species reactivity: Human	Range: 78 to 5000 pg/ml	
Sensitivity: 15 pg/ml	Sample type: Serum, Plasma, Cell Culture Supernatant	
Periostin (mouse) ELISA Kit	AG-45B-0005	Available Size: 96 wells
Species reactivity: Mouse	Range: 31 to 2000 pg/ml	
Sensitivity: 10pg/ml	Sample type: Serum, Plasma, Cell Culture Supernatant	
Periostin (human) Matched Pair Detection Set	AG-46B-0005	Reagents to perform 5 x 96 wells
Species reactivity: Human	Range: 80 to 5000 pg/ml	
Sensitivity: 30 pg/ml	Sample type: Serum, Plasma, Cell Culture Supernatant	
Periostin (mouse) Matched Pair Detection Set	AG-46B-0002	Reagents to perform 5 x 96 wells
Species reactivity: Mouse	Range: 31 to 2000 pg/ml	
Sensitivity: 20 pg/ml	Sample type: Serum, Cell Culture Supernatant	

GLOSSARY: CVD: Cardiovascular Disease; NAFLD: Non-Alcoholic Fatty Liver Disease; SLE: Systemic Lupus Erythematosus; RA: Rheumatoid Arthritis

Progranulin

• **Trusted Reproducible Results!** • **Used to Determine Cut-Off values for FTLD!**

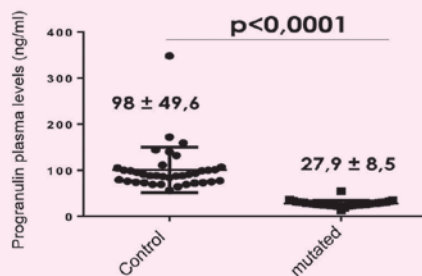
FTLD, Rheumatoid Arthritis, Various Cancers, Type 2 Diabetes (T2D), Bipolar Disorder

Progranulin (human) ELISA Kit THE STANDARD	AG-45A-0018Y	Available Sizes: 96 wells / Twin Plex
Species reactivity: Human	Range: 0.063 to 4 ng/ml	
Sensitivity: 32 pg/ml	Sample type: Serum, Plasma, Urine, Cell Culture Supernatant, CSF	
Progranulin (mouse) ELISA Kit THE STANDARD	AG-45A-0019Y	Available Sizes: 96 wells / Twin Plex
Species reactivity: Mouse	Range: 0.125 to 8 ng/ml	
Sensitivity: 60 pg/ml	Sample type: Serum, Cell Culture Supernatant	
Progranulin (rat) ELISA Kit THE STANDARD	AG-45A-0043Y	Available Sizes: 96 wells / Twin Plex
Species reactivity: Rat	Range: 0.063 to 4 ng/ml	
Sensitivity: 40 pg/ml	Sample type: Serum, Cell Culture Supernatant	
NEW Progranulin (human) ELISA Kit (mAb/mAb)	AG-45B-0027	Available Size: 96 wells
Species reactivity: Human	Range: 0.063 to 4 ng/ml	
Sensitivity: 60 pg/ml	Sample type: Serum, Cell Culture Supernatant	

The new mAb/mAb based human Progranulin ELISA Kit has been thoroughly validated and compared to the standard pAb/pAb based ELISA Kit (Prod. No. AG-45A-0018Y). With this new ELISA Kit, levels below 50 ng/ml are strongly suggestive of GRN mutations. In a validation on 191 patient samples, confirmed by a molecular gene analysis, the new kit provided a sensitivity and specificity of 100% for detecting FTLD mutations.

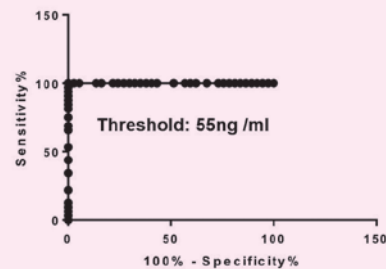
Concentrations of Progranulin plasma levels in FTLD and healthy samples:

Using the new mAb-based ELISA kit (AG-45B-0027), plasma progranulin levels in FTLD-GRN are lower (~28 ng/ml) compared to controls (~98 ng/ml).



ROC curve of the new ELISA Kit:

ROC analysis shows that at a threshold of 55 ng/ml plasma progranulin measured with ELISA Kit (AG-45B-0027) discriminates FTLD-GRN patients from controls with 100% sensitivity and 100% specificity.



RBP4

Insulin Resistance, Microalbuminuria, Type 2 Diabetes (T2D), CVD, Obesity, NAFLD, PCOS, Ovarian Cancer

RBP4 (human) ELISA Kit (Quantitative) THE STANDARD	AG-45A-0035Y	Available Sizes: 96 wells / Twin Plex
Species reactivity: Human	Range: 0.39 to 25 ng/ml	
Sensitivity: 380 pg/ml	Sample type: Serum, Plasma, Urine, Cell Culture Supernatant	
RBP4 (human) Competitive ELISA Kit	AG-45A-0010Y	Available Sizes: 96 wells / Twin Plex
Species reactivity: Human	Range: 0.001 to 5 µg/ml	
Sensitivity: 1 ng/ml	Sample type: Serum, Plasma, Urine, Cell Culture Supernatant	
RBP4 (mouse/rat) Dual ELISA Kit	AG-45A-0012Y	Available Sizes: 96 wells / Twin Plex
Species reactivity: Mouse / Rat	Range: 0.188 to 12 ng/ml	
Sensitivity: 60 pg/ml	Sample type: Serum, Urine, Cell Culture Supernatant	

Validated SARS-CoV-2 Research Assays



QUALITATIVE IgG DETECTION

SARS-CoV-2 (Spike RBD) IgG Serological ELISA Kit

AG-45B-0020 96 wells

This is a sensitive and specific ELISA Kit that can be used for the qualitative measurement of human Immunoglobulin G (IgG) against SARS-CoV-2 Spike (Receptor Binding Domain) protein in serum and plasma samples.

False Positive Control Plate:

Included in this assay kit and unique to the market for SARS-CoV-2 IgG assays, is a second plate (antigen non-coated Background Plate or False Positive Control Plate) to determine the sample specific background and to measure the amount of IgG antibodies non-specifically bound to the well. To measure presence of anti-SARS-CoV-2 human IgG antibodies in serum or plasma, net sample optical densities (Net ODs) are calculated by subtracting each sample Background Plate OD from the Spike (SARS-CoV-2) Antigen Plate (Spike Plate) OD.

Dry Blood Samples:

The Assay Kit can also be used with Dry Blood Samples, which is an inexpensive and easy alternative collecting blood!

VALIDATE SARS-CoV-2 IMMUNE RESPONSE

SARS-CoV-2 Neutralizing Antibodies Detection Kit

AG-48B-0002 96 wells

This Assay Kit that can be used to detect the presence of neutralizing antibodies against SARS-CoV-2 in serum/plasma in about 2 hours independently of species and isotypes! It is an easy, safe, fast and scalable alternative to the classical neutralization assays using Vero E6 cells, such as virus neutralization test (VNT) and pseudo-virus neutralization test (pVNT) and does **not** need to follow biosafety requirements.

Useful Tool for SARS-CoV-2 Vaccine and Therapeutic Development:

The kit is useful in current COVID-19 investigations of seroprevalence, assessment of immune response, herd immunity, longevity of protective immunity, efficacy of different vaccine candidates as well as tracking infections in animals.

To Confirm & Characterize further SARS-CoV-2 Serological Assay Results:

This Neutralizing Antibody Detection Kit is ideal to further characterize the positive anti-SARS-CoV-2 IgG antibodies, detected with the SARS-CoV-2 IgG (Spike RBD) Serological ELISA Kit (Prod. No. AG-45B-0020).

DISCOVERY OF INHIBITORS

SARS-CoV-2 Inhibitor Screening Kit

AG-48B-0001 96 wells

This is a High Throughput Screening (HTS) detection assay for the determination of SARS-CoV-2 blocking compounds.

QUANTITATIVE SOLUBLE ACE2 DETECTION

ACE2 (human) ELISA Kit

AG-45B-0023 96 wells

This is a sensitive and specific colorimetric sandwich ELISA Kit that can be used for the *in vitro* quantitative determination of soluble human ACE2 in cell culture supernatants, serum, plasma and urine.

Also Available:

SARS-CoV-2 Variants Neutralizing Antibody Detection Kits

- B.1.1.7 Variant, Alpha
- B.1.351 Variant, Beta
- P.1 Variant, Gamma
- B.1.617.1 Variant, Kappa
- B.1.617.2 Variant, Delta

RELM- β

Potential Gut-Inflammation, Inflammatory Bowel Disease, Crohn's Disease, Ulcerative Colitis

RELM- β (human) *Matched Pair Detection Set*

AG-46A-0001

Reagents to perform 5 x 96 wells

Species reactivity: Human
Sensitivity: 10 pg/ml

Range: 0.016 to 1 ng/ml
Sample type: Human Feces

Resistin

Insulin Resistance, Type 2 Diabetes (T2D), Obesity, NAFLD, Various Inflammatory Diseases

Resistin (human) ELISA Kit

AG-45A-0023Y

Available Size: 96 wells

Species reactivity: Human
Sensitivity: 100 pg/ml

Range: 0.125 to 8 ng/ml
Sample type: Serum, Plasma, Cell Culture Supernatant

Sirtuin 1

Inquire – Bulk Orders only

Metabolic Syndrome, Type 2 Diabetes, Alzheimer's Disease, Various Cancers, Inflammatory Diseases

Sirtuin 1 (human) (IntraCellular) ELISA Kit

AG-45A-0029Y

Species reactivity: Human
Sensitivity: 30 pg/ml

Range: 0.032 to 2 ng/ml
Sample type: Cell Lysate

Vaspin

Type 2 Diabetes (T2D), Obesity, Insulin Resistance, CVD, NAFLD, Inflammatory Diseases

Vaspin (human) ELISA Kit **THE STANDARD**

AG-45A-0017Y

Available Sizes: 96 wells / Twin Plex

Species reactivity: Human
Sensitivity: 12 pg/ml

Range: 0.016 to 1 ng/ml
Sample type: Serum, Plasma, Cell Culture Supernatant

Visfatin *see Nampt on Page 8*

Zinc- α -2-glycoprotein (ZAG)

Obesity, Various Cancers, Diabetic Nephropathy, Preeclampsia

ZAG (human) TurboELISA Kit

AG-48B-1000

Available Size: 96 wells

Species reactivity: Human
Sensitivity: 0.23 ng/ml

Range: 0.9375 to 60 ng/ml
Sample type: Serum, Plasma, Cell Culture Supernatant

ZAG (human) *Matched Pair Detection Set*

AG-46B-0008

Reagents to perform 5 x 96 wells

Species reactivity: Human
Sensitivity: 100 pg/ml

Range: 0.0156 to 1 ng/ml
Sample type: Serum, Plasma, Cell Culture Supernatant



JaICA

Unique High Quality ImmunoAssays

Oxidative Stress Marker Assays

PRODUCT NAME	PID	DETECTION RANGE	SAMPLES TYPES	SIZE
Dityrosine [DT] ELISA Kit	JAI-KDT-010E	0.05 – 12 µmol/L	UR	1x 96 wells
8-OHdG Check ELISA Kit	JAI-KOG-200SE	0.5 – 200 ng/mL	UR	1x 96 wells
8-OHdG Check ELISA Kit (High Sensitivity)	JAI-KOG-HS10E	0.125 – 10 ng/mL	PL, SE, UR	1x 96 wells
Hexanoyl-Lys [HEL] ELISA Kit	JAI-KHL-700E	2 – 700 nmol/L	SE, UR	1x 96 wells
Total Antioxidant Capacity (PAO) Test Kit	JAI-KPA-050	21.9 – 4378 µmol/L (cupric ion reducing power)	PL, SE	1x 96 wells

Trace Element Colorimetric Assays

PRODUCT NAME	PID	DETECTION RANGE	SAMPLES TYPES	SIZE
Iron Assay Kit (Ferrozine Method)	JAI-CFE-005	5 – 1000 µg/dL	CL, PL, SA, SE, TS, UR	100 tests
Iron Assay Kit (Nitroso-PSAP Method)	JAI-CFE-010	10 – 1000 µg/dL	CL, PL, SA, SE, TS, UR	100 tests
UIBC Assay Kit (Bathophenanthroline Method)	JAI-CBC-800	10 – 800 µg/dL	PL, SE	100 tests
Copper Assay Kit (3,5-DiBr-PAESA Method)	JAI-CCU-400	3 – 400 µg/dL	CL, PL, SA, SE, TS, UR	100 tests
Zinc Assay Kit (5-Br-PAPS Method)	JAI-CZN-001	4 – 1000 µg/dL	CL, PL, SA, SE, TS, UR	100 tests
Calcium Assay Kit (Chlorophosphonazo-III Method)	JAI-CCA-020	0.2 – 20 mg/dL	CL, PL, SA, SE, TS, UR	200 tests
Calcium Assay Kit (O-Cresolphthalein Method)	JAI-CCA-030	0.2 – 30 mg/dL	CL, PL, SA, SE, TS, UR	200 tests
Magnesium Assay Kit (Xylidyl Blue-I Method)	JAI-CMG-035	0.2 – 3.5 mg/dL	CL, PL, SA, SE, TS, UR	100 tests

Sample Types: CL=Cell Lysate; PL=Plasma; SA=Saliva; SE=Serum; TS=Tissue Supernatant; UR=Urine

Latest Additions

Developed & Manufactured by AdipoGen Life Sciences

AdipoGen[®]
LIFE SCIENCES



NEW

- **Progranulin (human) ELISA Kit (mAb/mAb)**
see Page 9
- **FNDC4 (human) ELISA Kit**
see Page 5



AdipoGen[®]
LIFE SCIENCES
www.adipogen.com

EUROPE/REST OF WORLD
AdipoGen Life Sciences
TEL +41-61-926-60-40
FAX +41-61-926-60-49
info@adipogen.com

NORTH & SOUTH AMERICA
Adipogen Corp.
TEL +1-858-457-8383
FAX +1-858-457-8484
info-us@adipogen.com

For local distributors please visit our website.