

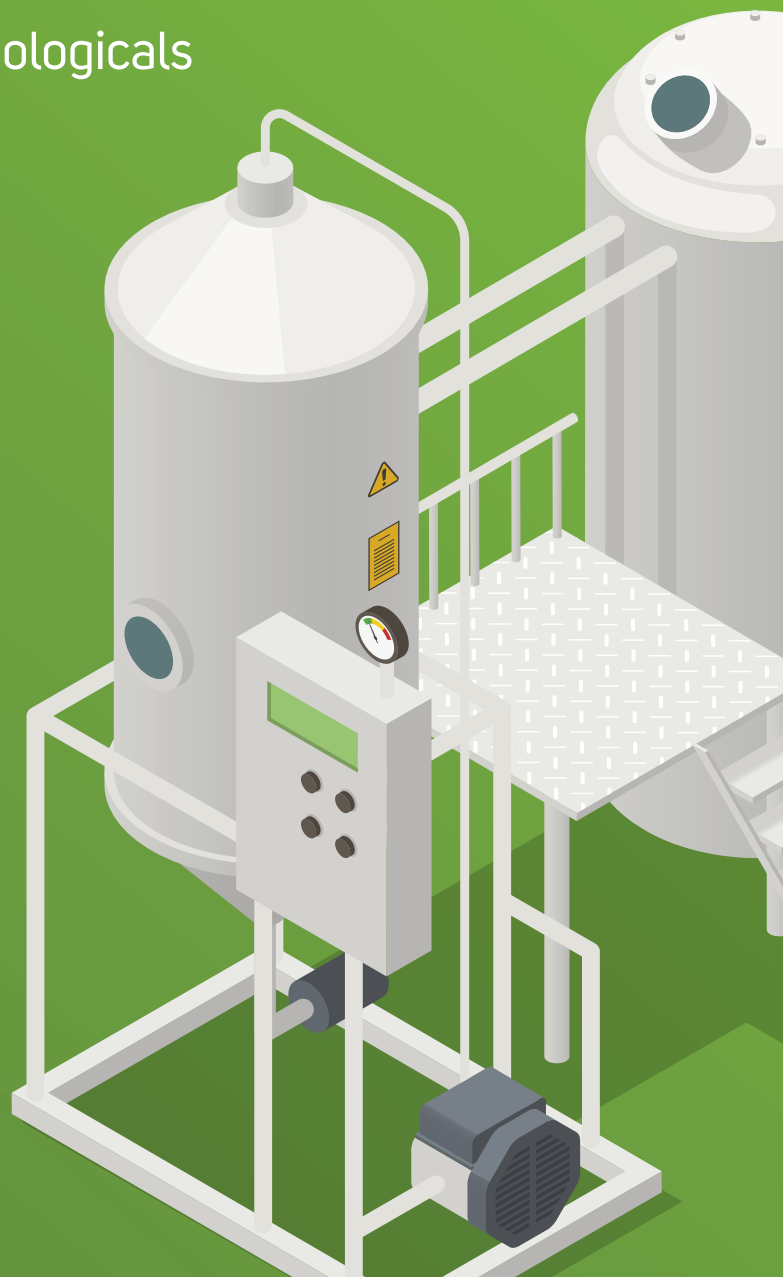
# Biotech services & partnering

Accelerate the development and  
scale up the production of your biologicals

The need for non-animal-derived proteins is increasing due to both safety and practical reasons. Therefore, we are expanding our services to help you bring your **recombinant protein development** from **lab scale** to the **early clinical phase**.

We are working towards **GMP compliance**, drawing on our extensive experience providing pharma services. Along with our **in-house QC**, and **method validation expertise**, we can provide the infrastructure to support you in creating proteins for different purposes, including:

- + Non-GMP or preclinical proteins for R&D and industrial purposes
- + Partnerships to develop products for future GMP applications



## Equipment

Our state-of-the-art biotech facility is well equipped for a broad range of microbial fermentation and purification strategies to support biological process development to first in human.

- Shaking incubators for flask cultures
- Bioreactors: 0.5 LT – 5 LT and 50 LT total volume
- High-speed centrifuge
- Bioprocess homogenizer, up to 1200 bars for cell lysis
- Chromatography systems: R&D and pilot scale
- Ultrafiltration: Tangential flow filtration (TFF) system
- Lyophilization
- Analytical equipment, including:
  - HPLC
  - Electrophoresis
  - Absorbance plate reader (e.g., enzymatic analysis / Bradford assays)

## Upstream bioprocess development

We can culture microorganisms up to biosafety level 2 (**BSL-2**) in our facility that is designed to work safely with genetically modified organisms up to containment level **ML-II**.

## Downstream protein purification

Our advanced downstream equipment provides us with many strategies to process your biomolecules. From developing an optimal purification scheme, to testing scale-up and performing purification, we can help you with the full process.

## Upscaling and production

Once your bioprocess has been developed, we can help you with **upscaling and production** of your protein so you can move to the next stages of testing. Take advantage of our laboratory services to ensure the quality of your final product, then we can perform **lyophilization** and **fill & finish** to your requirements.

## Strain development

We can aid you in developing an optimal microbial strain to produce high-quality recombinant proteins in yeast or bacterial host strains, such as *Pichia pastoris* or *Escherichia coli*. Our expression screening support can help you to identify the best-performing clones to use for production.

As your partner we can tailor all services to your specific needs, while respecting all relevant quality guidelines.

### Full service

We have **wide-ranging experience** in drug development, manufacturing, and regulatory affairs. This means we can support your entire process **from product development to commercialization**.

### Quality-assured

We are **fully compliant with GMP and ISO 13485:2016 certification** and our Quality Management Systems (QMS) is regularly updated with the latest standards and customer feedback.

### Empowered

Our employees apply their expertise to help you find **the optimal path towards success**. They work in a versatile and proactive way, supporting where needed, so you can focus on your other important business goals. Together, we'll identify the **most cost- and time- efficient path towards success**.



Contact us to learn about our partnering opportunities.

Visit [www.basicpharma.nl](http://www.basicpharma.nl) to view our other services

