

# ARPENspin FFPE Tissue DNA Extraction Kit

Extract high-quality DNA from from FFPE tissue sections

## Description

This kit extracts high-quality DNA from paraffin-embedded or formalin-fixed tissue. Using a non-toxic dewaxing solution and a specialized lysis buffer, it efficiently releases DNA with high integrity and purity. The workflow includes inhibitor-removal steps and a high-efficiency binding system, ensuring clean DNA suitable for downstream applications such as PCR, real-time PCR, SNP analysis, STR profiling, and more.

## Key Benefits We Deliver



### Safe and nontoxic dewaxing solution

It uses a safe, non-toxic dewaxing solution that efficiently removes paraffin while preserving sample quality, providing a cleaner and more user-friendly workflow



### High integrated and Stable yield

It delivers DNA with high integrity and a stable, reliable yield, ensuring consistent performance across a wide range of downstream applications.



### No phenol / chloroform

The protocol uses no phenol or chloroform, replacing these hazardous chemicals with a safe and non-toxic solution.

## Proven Performance

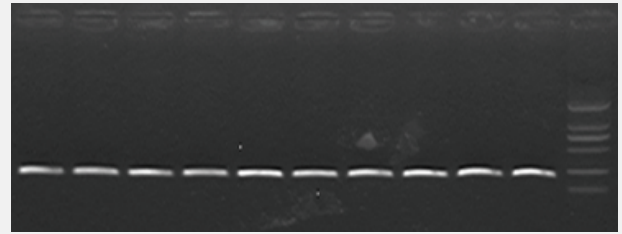
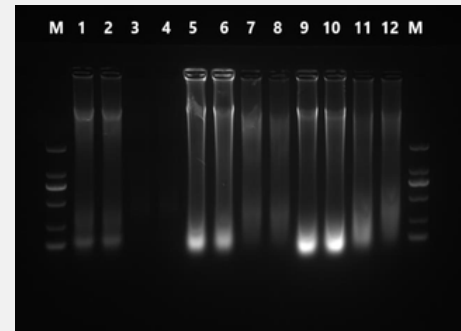
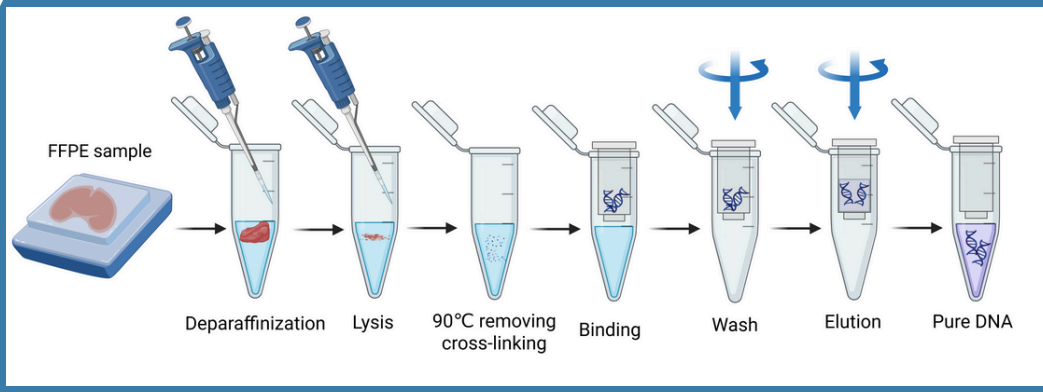


Figure 1: PCR result of humo  $\beta$ -actin



ARPENspin FFPE and Q Company DNA FFPE Tissue Kit were used for DNA extraction of different types of tissues and the test results are as follows:

Sample	No.	Nucleic Acid (ng/ $\mu$ L)	260/280	260/230	Average Con. (ng/ $\mu$ L)
ARPENspin-Pork meat	1	376.8	2.04	2.22	393.2
ARPENspin-Pork meat	2	409.6	2.03	2.20	393.2
Q-Pork meat	3	44.1	2.03	0.81	45
Q-Pork meat	4	45.9	2.01	0.79	45
ARPENspin-Mouse kidney	5	1647.4	1.98	2.14	1548.7
ARPENspin-Mouse kidney	6	1450	1.97	2.16	1548.7
Q-Mouse kidney	7	406.1	2.03	2.18	358.8
Q-Mouse kidney	8	311.5	2.05	2.09	358.8
ARPENspin-Mouse liver	9	1474.5	2.01	1.94	1562.8
ARPENspin-Mouse liver	10	1651.1	2.02	1.97	1562.8
Q-Mouse liver	11	814.8	2.04	1.95	705.7
Q-Mouse liver	12	596.6	2.00	1.82	705.7



## Product Information

Features	Specifications
Sample	Paraffin-embedded tissue or formalin-fixed tissues
DNA concentration (ng/μL)	300-500 ng/μL
Yield	High purity DNA
Extraction technology	Spin Column
Storage Conditions	PK Solution store at 2-8°C Other components store at 25°C

## Ordering Information

Product Name	Catalog Number	Package
ARPENspin FFPE Tissue DNA Extraction Kit	ARP-FTDES50	50T