

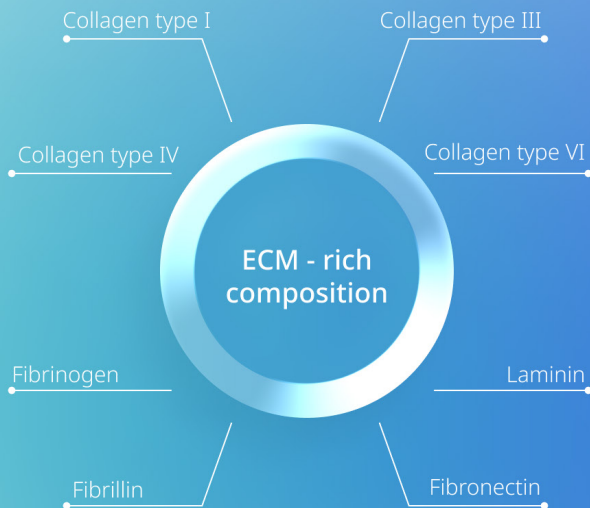
hPCMA

Human Methacryloyl Placenta

hPCMA is an innovative human placenta-derived material with tunable mechanical properties, offering a collagen-rich microenvironment for 3D cell culture that supports cell adhesion, growth, and proliferation.

“The greatest experiments have always been the most humane”

W. Russell e R. Burch The Principles of Humane Experimental Technique, 1959



Address

PCI · Creative Science Park Aveiro
Region Via do Conhecimento,
Edifício Central
3830-352 Ílhavo, Portugal



Contact

info@metatissue.com
(+351) 234 243 836



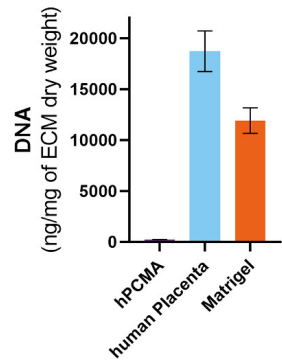
metatissue

hPCMA

Human Methacryloyl Placenta

Specifications

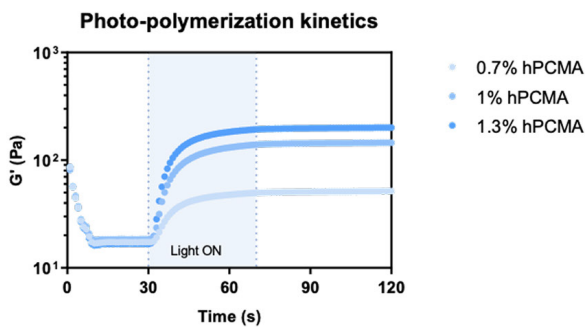
- > White and fibrous lyophilized material
- > Controlled degree of methacrylation
- > Sterile
- > Supports in vitro maintenance of adherent cultured cells
- > ≤ 400 ng of DNA/mg of dry ECM



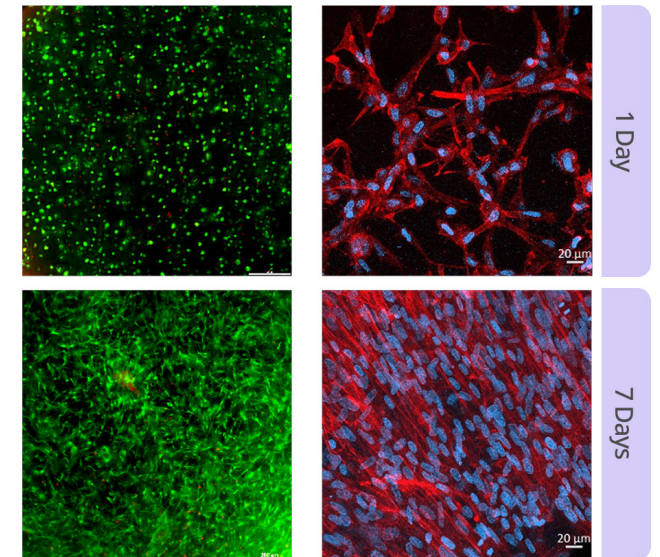
Mechanically tunable

hPCMA hydrogels have tunable mechanical properties that can be modified by altering the biomaterial concentration in the precursor solution, allowing for the simulation of varying tissue stiffness.

hPCMA stiffness



Cell viability and proliferation



Encapsulated human adipose-derived stem cells (*hASCs*) maintain their viability for at least 7 days and are able to proliferate inside the hydrogels.

hASCs in hPCMA hydrogels

