

Classical Spatial Biology Solution

ANTBIO's end-to-end Spatial Biology Solutions are grounded in Immunohistochemistry (IHC) and Multiplex Immunohistochemistry (mIHC). Our comprehensive portfolio includes highly validated IHC antibodies, optimized IHC secondary antibody detection kits, robust mIHC detection kits, and essential auxiliary reagents—all engineered for consistency, sensitivity, and reliability.

By bridging single-plex IHC with high-plex mIHC capabilities, we enable precise mapping of biomarker expression and spatial distribution within intact tissue architecture. Whether characterizing tumor microenvironments or validating therapeutic targets, our solutions support high-throughput, cost-effective analysis of precious samples, empowering confident translation into impactful research and clinical outcomes.

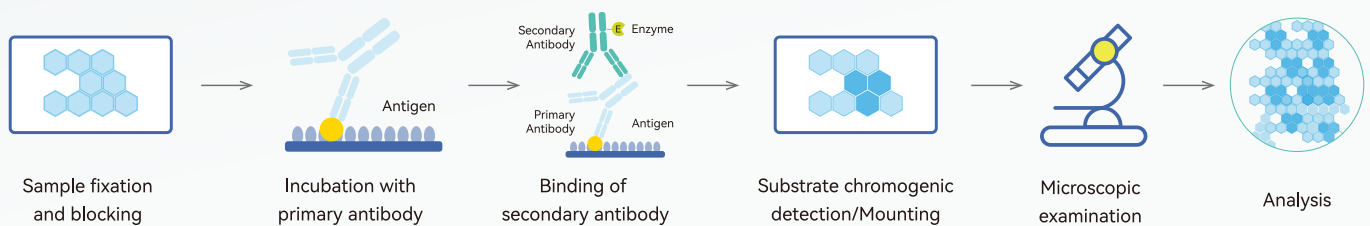
IHC Primary Antibodies

Features

- High Specificity
- High Sensitivity
- High Batch-to-Batch Consistency
- Low Background

Advantages

- Multilevel Validation
- Cost-Effective
- Stable In-Stock Supply



Cat. No.	Antigen	Cat. No.	Antigen	Cat. No.	Antigen	Cat. No.	Antigen
Tumor Markers							
S0B2091	CEA (CD66e)	S0B2187	PD-1	S0B2146	p53	S0B2309	ErbB3
S0B2255	CA125	S0B2165	c-Myc	S0B2118	CK-Pan	S0B0286	NaPi2b/SLC34A2
S0B2068	PD-L1	S0B0329	Pan Trk	S0B2119	CK-HMW	S0B2247	S100B
S0B2134		S0B2332	Ki67	S0B2074	ErbB2	S0B2282	p27
Neuropathology							
S0B2220	NeuN	S0B2306	PGP9.5	S0B2279	LHB	S0B2432	Phospho- α -Synuclein (Ser129)
S0B2059	Synaptophysin	S0B2447	Calretinin	S0B2263	MGMT	S0B2326	PHOX2B
S0B2004	Vimentin	S0B2271	FSHB	S0B2261	Olig2	S0B2031	S100P
Soft Tissue & Skin Pathology							
S0B2452	Sp7/Osterix	S0B2009	CD31	S0B2262	CK-13	S0B2019	NSE
S0B2087	CD45	S0B2181	Bcl-2	S0B2120	CYFRA 21-1	S0B2090	SOX-10
S0B2058	Cytokeratin 19	S0B2049	p63	S0B2474	Cytokeratin 1	S0B2318	TFE3
S0B2059	Synaptophysin	S0B2029	CD34	S0B2264	Factor XIIIa	S0B2321	Desmin
S0B2004	Vimentin	S0B2188	CD146	S0B2315	MDR1/ABCB1	S0B2415	Myogenin

Cat. No.	Antigen	Cat. No.	Antigen	Cat. No.	Antigen	Cat. No.	Antigen
Gastrointestinal Pathology							
S0B2070	Claudin18.2	S0B2058	Cytokeratin 19	S0B2048	Caldesmon	S0B2331	MUC2
S0B2069		S0B2252	Helicobacter pylori	S0B2057	CK-7	S0B2294	MUC4
S0B2191	CLAUDIN18.2 + CLAUDIN18.1	S0B2112	E-Cadherin	S0B2120	CYFRA 21-1	S0B2162	Nestin
S0B2110	MSH6	S0B2029	CD34	S0B2328	FGF-19	S0B2214	p120 Catenin
S0B2145	EGFR	S0B2319	ROR1	S0B2083	Insulin	S0B2031	S100P
S0B2223	E-Cadherin	S0B2320		S0B2150	MSH2	S0B2017	Villin
S0B2081	MUC6	S0B2232	FGFR2b	S0B2284	MUC1	S0B2079	CDX
S0B2165	c-Myc	S0B2291	Cadherin 17	S0B2293	MUC1	S0B2097	SATB2
Reproductive & Urological Pathology							
S0B2087	CD45	S0B2126	OCT3/4	S0B2147	ERG	S0B2310	PAP
S0B2059	Synaptophysin	S0B2085	AFP	S0B2275	FOLR1	S0B2281	PLAP+ALPI
S0B2181	Bcl-2	S0B2457	AKAP4	S0B2451	FOXA1	S0B2133	PSA
S0B2004	Vimentin	S0B2189	AMACR/P504S	S0B2162	Nestin	S0B2031	S100P
S0B2049	p63	S0B2255	CA125	S0B2453	NKX3.1	S0B2343	SALL4
S0B2273	Inhibin alpha	S0B2048	Caldesmon	S0B2468	NOD2	S0B2358	STF-1
S0B2001	Bcl-2	S0B2260	CD10	S0B2019	NSE	S0B2084	CD117
S0B2041	CD15	S0B0337	CD44	S0B2274	p57	S0B2233	Uroplakin III
Hematopathology							
S0B2179	CD4	S0B2095	AFP	S0B2266	CD16	S0B2347	CD79B
S0B2194	CD163	S0B2197	Galectin-3	S0B2164	CD19	S0B2153	CD99
S0B2307	CD8α	S0B2038	CD38	S0B2317	CD20	S0B2292	Fascin
S0B2064	CD68	S0B2159	CD138	S0B2003	CD21	S0B2101	FOXP1
S0B2195		S0B2043	CD21	S0B2267	CD235a/Glycophorin A	S0B2257	HLA-DRB1
S0B2009	CD31	S0B2258	CD3 epsilon	S0B2183	CD30	S0B2278	Langerin
S0B2181	Bcl-2	S0B2041	CD15	S0B2144	CD43	S0B2470	PF4
S0B2001		S0B2116	CD1a	S0B0337	CD44	S0B2456	TdT
S0B2093	BCL-6	S0B2256	CD2	S0B2441	CD5	S0B2226	PAX5
S0B2029	CD34	S0B2050	CD14	S0B2171	CD7	S0B2130	MPO
Endocrine Pathology							
S0B2058	Cytokeratin 19	S0B2303	NKX2.2	S0B0916	DLL3	S0B2156	TG
S0B2059	Synaptophysin	S0B2290	CD147	S0B2083	Insulin	S0B2296	TPO
S0B2254	Vimentin	S0B2302	CGA/HCG-α	S0B2019	NSE	S0B2198	PTH
S0B2197	Galectin-3	S0B2120	CYFRA 21-1	S0B2304	PU.1	S0B2405	GATA3
Breast & Gynecologic Pathology							
S0B2052	c-Met	S0B2049	p63	S0B2451	FOXA1	S0B2269	NY-BR-1
S0B2145	EGFR	S0B2277	Nectin-4	S0B2333	GCDFP-15	S0B2155	PR
S0B2223	E-Cadherin	S0B2312		S0B2286	Integrin beta1/CD29	S0B2057	CK-7
S0B2112		S0B2444	ERα	S0B0515	KRAS	S0B2030	Calponin-1
Pulmonary Pathology							
S0B2129	TTF-1	S0B2004	Vimentin	S0B2057	CK-7	S0B2297	MMP9
S0B2087	CD45	S0B2362	p40	S0B2138	CK5/6	S0B2442	Napsin A
S0B2145	EGFR	S0B2049	p63	S0B2283	Claudin 5	S0B2472	
S0B2058	Cytokeratin 19	S0B2029	CD34	S0B2120	CYFRA 21-1	S0B2214	p120 Catenin
S0B2059	Synaptophysin	S0B2422	CD56	S0B2461	INSM1	S0B2446	Uteroglobin

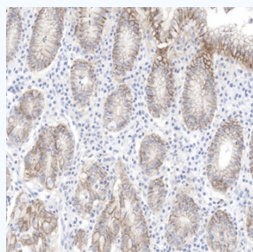
IHC Detection Kits & Secondary Antibodies

Category	Cat. No.	Product Name	Features
IHC Detection Kits	S0C2011	Anti-Rabbit and Mouse HRP-DAB IHC detection kit (2-step)	The two-step method (with Enhancer) has better signal amplification capability
	S0C1001	Anti-Rabbit and Mouse HRP&DAB IHC detection kit	Mouse & rabbit universal
Secondary Antibodies	S0B4003	OneStep polymer HRP Goat anti-Rabbit and Mouse IgG (H+L) (specific for IHC)	One-step method & polymer-HRP conjugated secondary antibodies
	S0B4029	HRP Goat anti-Rabbit IgG (H+L) (Ready-to-use, specific for IHC)	Ready-to-use secondary antibodies
	S0B4015	Goat Anti-Rabbit IgG (H+L) (min X Hu Sr Prot), HRP	HRP conjugated secondary antibodies
	S0B4011	Goat Anti-Rabbit IgG (H+L) (min X Hu Sr Prot)	Raw material grade
	S0B4020	Donkey Anti-Goat IgG(H+L) (min X Hu Sr Prot)	Raw material grade
	S0B4059	Goat Anti-Mouse IgG (H+L) (min X Hu, Bov Sr Prot)	Raw material grade
Auxiliary Reagents	S0D0001	Antibody Diluent	For antibody dilution
	S0C2008	DAB Reagent	Chromogenic substrate
	S0D0006	Hematoxylin Stain Solution	For counterstaining

Performance Data

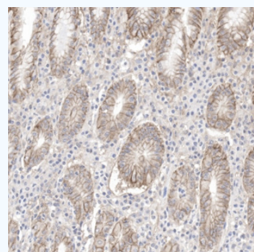
S-RMab® Antibody, High sensitivity, High specificity, Stable batch to batch Consistency

Excellent specificity and sensitivity



Human stomach tissue
#S0B2070

ANTBIO Antibody

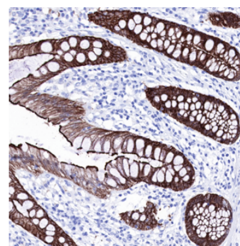


Human stomach tissue

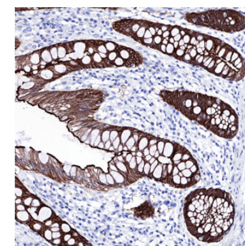
Other Company

Compared with other antibodies, the IHC results of S-RMab® Claudin 18.2 show that S-RMab® antibody is more sensitive and has better specificity in human stomach tissue samples.

Stable batch to batch consistency



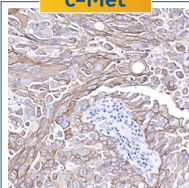
Cat. No.: S0B2017
Product: Villin
Tissue: Human colon
Dilution: 1:2000
Lot No: RMA1026012
Production Date:2022.10.26



Cat. No.: S0B2017
Product: Villin
Tissue: Human colon
Dilution: 1:2000
Lot No: RMB0320002
Production Date:2023.3.20

Different batches of Villin antibody tested on human colon patient samples show that lot number RMA1026012 exhibits stable lot-to-lot consistency with lot number RMB0320002.

c-Met

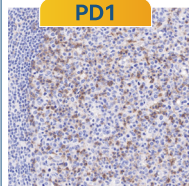


c-Met, also referred to as tyrosine protein kinase Met or hepatocyte growth factor receptor (HGFR). MET is dysregulated in many types of human malignancies, including kidney, liver, stomach, breast, and brain cancers.

Product: c-Met Recombinant Rabbit mAb
Tissue: Human lung cancer
Localization: Cytoplasm, cell membrane

Antigen retrieval solution: Tris/EDTA (pH 9.0)
Antigen retrieval method: High temperature and high pressure

PD1

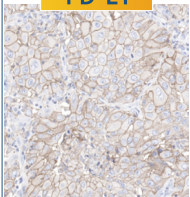


Programmed cell death protein 1, commonly referred to as PD-1 and CD279 (Cluster of Differentiation 279), is a surface protein found on T and B cells.

Product: PD1 Recombinant Rabbit mAb
Tissue: Human tonsil
Localization: Cell membrane

Antigen retrieval solution: Tris/EDTA (pH 9.0)
Antigen retrieval method: High temperature and high pressure

PD-L1

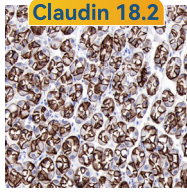


Programmed death ligand 1 (PD-L1), also called cluster of differentiation 274 (CD274) or B7 homolog 1 (B7-H1), represents a protein encoded by the CD274 gene in human. The up-regulation of PD-L1 on immune cells (especially myeloid cells) can also lead to the formation of an immune-suppressive environment in a highly localized manner, which also fosters cancer cells to proliferate.

Product: PD-L1 Recombinant Rabbit mAb
Tissue: Human lung squamous cell carcinoma
Localization: Cell membrane

Antigen retrieval solution: Tris/EDTA (pH 9.0)
Antigen retrieval method: High temperature and high pressure

Claudin 18.2



Claudin 18.2, located in the extracellular membrane, is involved in tumor development and progression. It has exposed extracellular loops for monoclonal antibody binding.

Product: Claudin18.2 Recombinant Rabbit mAb
Tissue: Human gastric cancer
Localization: Cell membrane

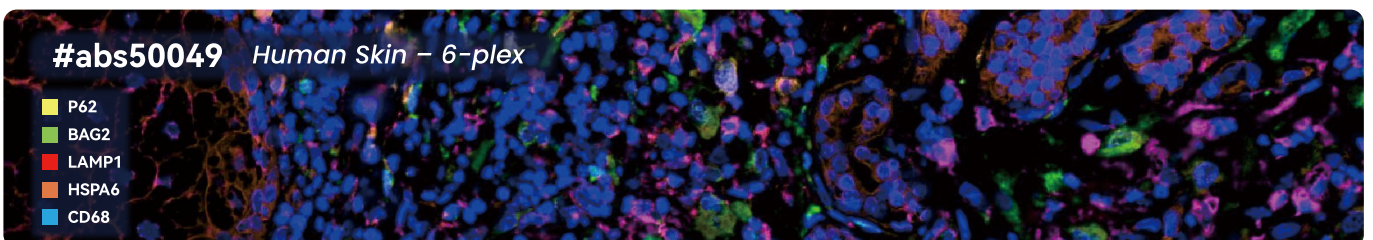
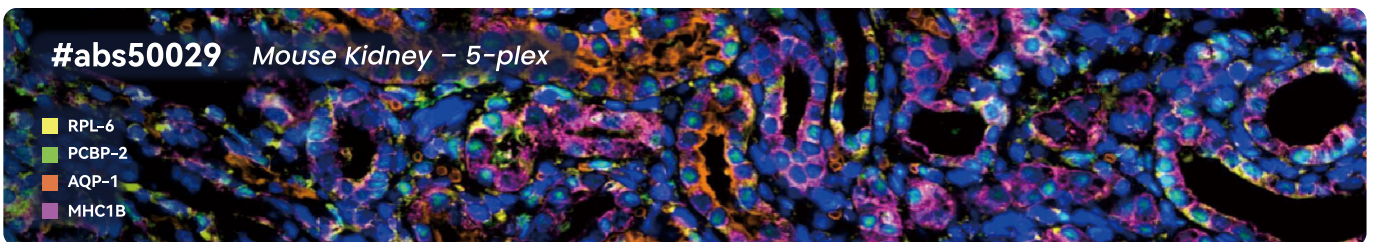
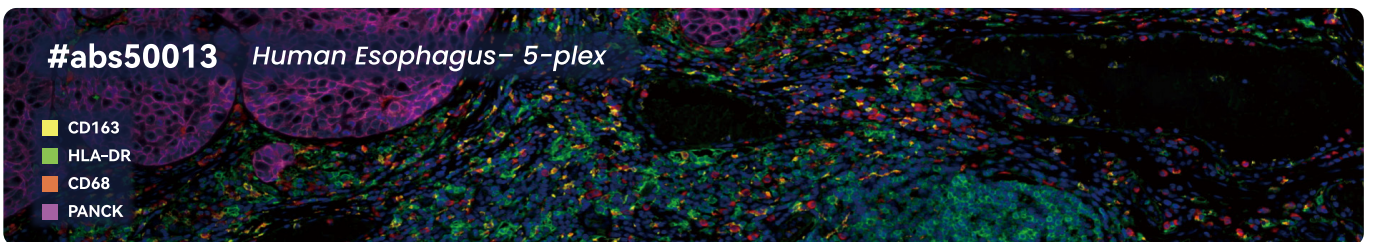
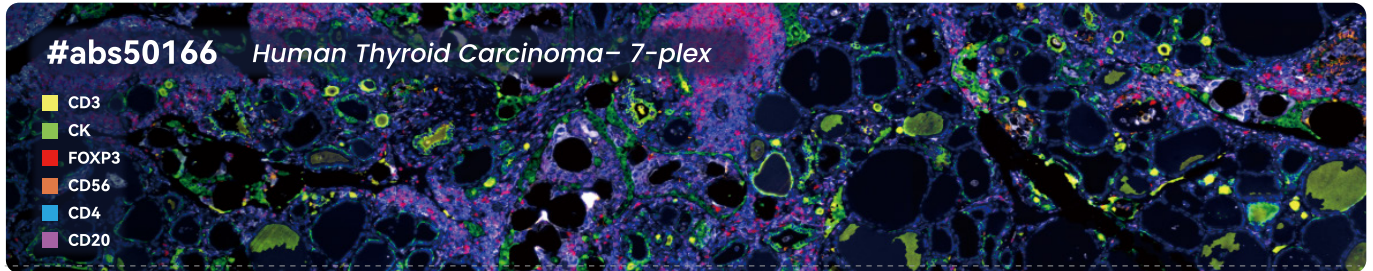
Antigen retrieval solution: Tris/EDTA (pH 9.0)
Antigen retrieval method: High temperature and high pressure

mlHC Detection Kits

Advantages

- Transcending sample-type boundaries—whether fresh-frozen sections (optimized with #abs994 Antibody Stripping Buffer), FFPE tissue, adherent cell preparations, or tissue microarrays—the platform delivers exceptional performance and ensures reproducible, high-fidelity results.
- Powered by an advanced anti-quenching formulation, the kit guarantees complete freedom from photobleaching artifacts, ensuring unwavering confidence and reproducibility in every experiment.
- By integrating polymer-HRP-conjugated secondary antibodies with an optimized signal-amplification reagent, our kit delivers a marked enhancement of fluorescent signals, pushing detection sensitivity to unprecedented levels and ensuring even the faintest targets are unequivocally revealed.
- The 6-color Plus panel has been extended from 650–700 nm to 700–770 nm, and the 7-color Plus panel from 540–650 nm to 480–770 nm, delivering markedly broader spectral coverage and enabling sharper, artifact-free signal discrimination for your multiplex assays.

Staining Performance



Cat. No.	Product Name	Specification	Citations
mIHC Detection Kits			
abs50086	Absin 2-Color IHC Kit (Anti-Rabbit Secondary Antibody)	100T	
abs50087	Absin 2-Color IHC Kit (Anti-Rabbit and Mouse Secondary Antibody)	100T	
abs50088	Absin 3-Color IHC Kit (Anti-Rabbit Secondary Antibody)	100T	
abs50089	Absin 3-Color IHC Kit (Anti-Rabbit and Mouse Secondary Antibody)	100T	
abs50028	Absin 4-Color IHC Kit(Anti-Rabbit Secondary Antibody)	20T/50T/100T	50+
abs50012	Absin 4-Color IHC Kit (Anti-Rabbit and Mouse Secondary Antibody)	20T/50T/100T	200+
abs50029	Absin 5-Color IHC Kit (Anti-Rabbit Secondary Antibody)	20T/50T/100T	30+
abs50013	Absin 5-Color IHC Kit (Anti-Rabbit and Mouse Secondary Antibody)	20T/50T/100T	60+
abs50030	Absin 6-Color IHC Kit (Anti-Rabbit Secondary Antibody)	20T/50T/100T	10+
abs50014	Absin 6-Color IHC Kit (Anti-Rabbit and Mouse Secondary Antibody)	20T/50T/100T	30+
abs50048	Absin 6-Color IHC Kit (plus)(Anti-Rabbit Secondary Antibody)	20T/50T/100T	
abs50049	Absin 6-Color IHC Kit (plus) (Anti-Rabbit and Mouse Secondary Antibody)	20T/50T/100T	
abs50031	Absin 7-Color IHC Kit(Anti-Rabbit Secondary Antibody)	20T/50T/100T	5
abs50015	Absin 7-Color IHC Kit (Anti-Rabbit and Mouse Secondary Antibody)	20T/50T/100T	30+
abs50037	Absin 7-Color IHC Kit (plus) (Anti-Rabbit and Mouse Secondary Antibody)	20T/50T/100T	6
abs50038	Absin 7-Color IHC Kit (plus) (Anti-Rabbit Secondary Antibody)	20T/50T/100T	5
abs50165	Absin 7-Color IHC Kit (TSA770 Dye Enhanced)(Anti-Rabbit Secondary Antibody)	20T/50T/100T	
abs50166	Absin 7-Color IHC Kit (TSA770 Dye Enhanced)(Anti-Rabbit&mouse Secondary Antibody)	20T/50T/100T	
abs50018	Absin 10-Color IHC Kit	100T	2

Cat. No.	Product Name	Specification
Tumor Microenvironment mIHC Kits		
abs50083	Lung Cancer Tumor Microenvironment mIHC Detection Kit (I)	20T
abs50084	Lung Cancer Tumor Microenvironment mIHC Detection Kit (II)	20T
mIHC Dyes		
abs50077	mIHC Dye (TSA570)	100T
abs50075	mIHC Dye (TSA480)	100T
abs50076	mIHC Dye (TSA520)	100T
abs50078	mIHC Dye (TSA620)	100T
abs50079	mIHC Dye (TSA700)	100T
abs50100	mIHC Dye (TSA540)	100T
abs50101	mIHC Dye (TSA650)	100T
abs50081	mIHC Dye (TSA770)	100T
abs50080	mIHC Dye (TSA770) Two-step Method	100T

Citations

Absin 4-Color IHC Kit(Anti-Rabbit Secondary Antibody) #abs50028

- [1] The immune-suppressive landscape in lepromatous leprosy revealed by single-cell RNA sequencing. PMID:35013182 **IF: 38.074**
- [2] Interleukin-34-orchestrated tumor-associated macrophage reprogramming is required for tumor immune escape driven by p53 inactivation.PMID:393218061 **IF: 25.5**

Absin 5-Color IHC Kit (Anti-Rabbit and Mouse Secondary Antibody)

#abs50013

- [1] Cancer Discov.2023 Oct 5;13(10):2248-2269.doi:10.1158/2159-8290.CD-23-0282.PMID:37486241 **IF: 28.2**
- [2] An inflammatory checkpoint generated by IL1RN splicing offers therapeutic opportunity for KRAS mutant intrahepatic PMID:37486241 **IF: 27.287**
- [3] The thermogenic activity of adjacent adipocytes fuels the progression of ccRCC and compromises anti-tumor herapeutic **IF: 28.2**
- [4] CellMetab.2021 Oct5;33(10):2021-2039.e8.doi:10.1016/j.cmet.2021.08.012.Epub2021Sep10.PMID:34508696 **IF: 27.28**

Absin 4-Color IHC Kit (Anti-Rabbit and Mouse Secondary Antibody)

#abs50012

- [1] Chemical-induced chromatin remodeling reprograms mouse ESCs to totipotent-like stem cells PMID:35143761 **IF: 24.633**
- [2] Disruption of CerS6-mediated sphingolipid metabolism by FTO deficiency aggravates ulcerative colitis **IF: 24.5**
- [3] Targeting MS4A4A on tumour-associated macrophages restores CD8+ T-cell-mediated antitumour immunity PMID:37507218 **IF: 24.5**
- [4] Reciprocal costimulatory molecules control the activation of mucosal type 3 innate lymphoid cells during engagement with B cells PMID:37225838 **IF: 24.1**

Absin 5-Color IHC Kit (Anti-Rabbit Secondary Antibody)

#abs50029

- [1] The diapause-like colorectal cancer cells induced by SMC4 attenuation are characterized by low proliferation and chemotherapy insensitivity **IF: 29**
- [2] Cell-type-specific expression analysis of liver transcriptomics with clinical parameters to decipher the cause of intrahepatic inflammation in chronic hepatitis B. PMID:39135698 **IF: 23.7**

Call to Action: Unlock Precise Tissue Insights with AntBio

Specific Action Guidelines:

I. Volume-based discount:

Note: This volume-based discount can not be used with other discounts.

a.

20% off 5 items purchase order

b.

10% off for the first order

II. Email Consultation & Inquiry: Contact info@antbioinc.com with your demands to get professional help.

III. Explore More on Our Official Platform:

For easier procurement and R&D efficiency, visit our official e-commerce site: www.antbioinc.com. Here you can:

1. Quickly locate products via smart filters;
2. Access product manuals, technical protocols, and research solutions;
3. Enjoy one-click ordering, real-time tracking, and dedicated after-sales support.

- Key Product Lines -

ELISA Kits

Conventional ELISA Kit

OneStep ELISA Kit

Organoids

Organoid Culture Kit

Cytokines/ Cytokine Sets

Spatial Biology

IHC Antibody Detection Kit

mIHC Kit

Proteomics

PTM Antibody

Peptide Mapping Protease

Drug Discovery

Therapeutic Target Proteins / Enzymes

ELISA / FACS TR-FRET/Luciferase

Internalization/ Anti-payload/ idiotypic

IVD Materials

CDx/IHC Antibody

Paired Antibody

IVD Antigen

ANT BIO PTE. LTD.

www.antbioinc.com

Email: info@antbioinc.com

Fueling Research, Feeding Discovery

[f](#) [X](#) [in](#) @antbio



Contact & More